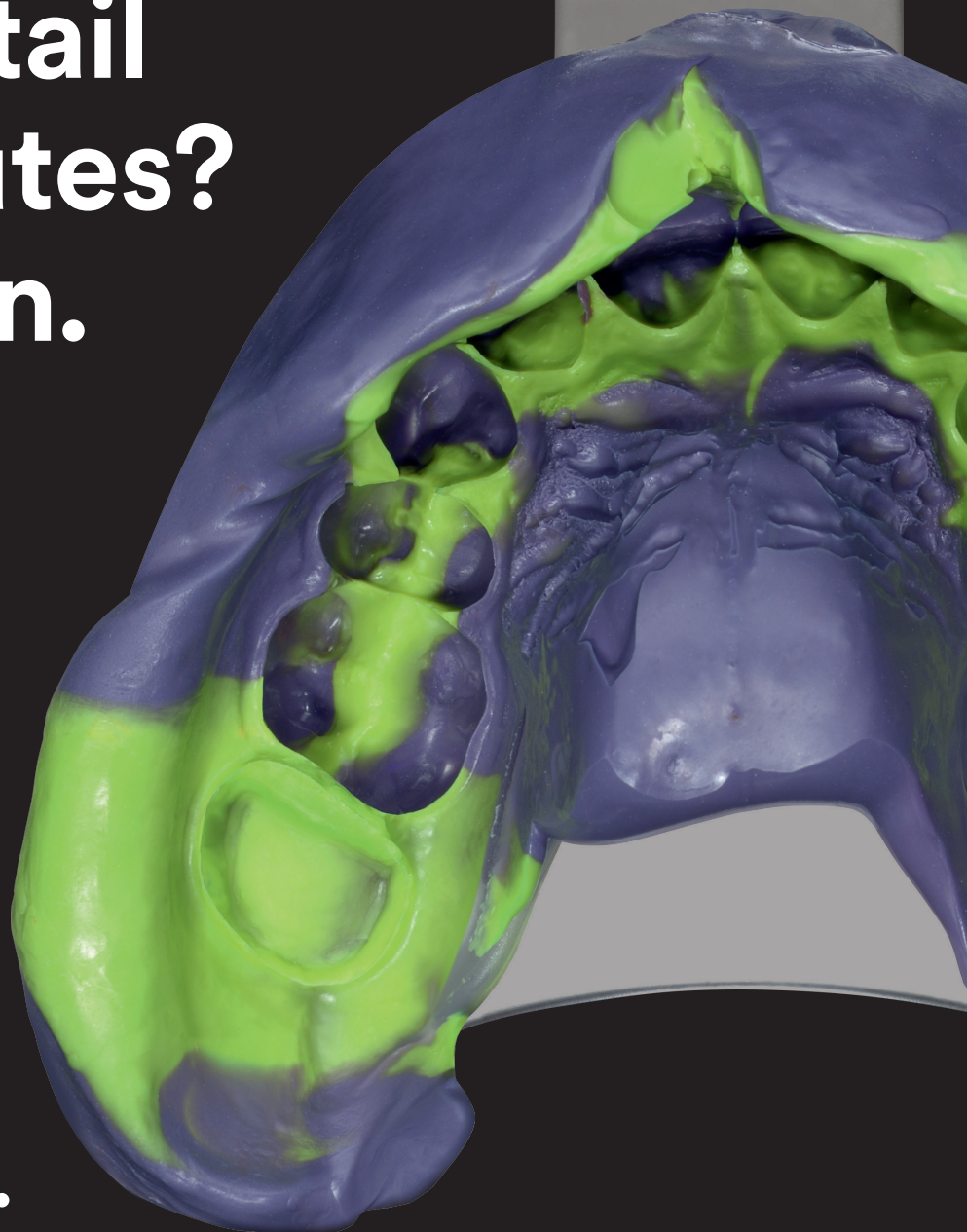


**3M** Science.  
Applied to Life.™



**3M™ Impregum™ Super Quick**  
Polyether Impression Material

**Capture  
every detail  
in 2 minutes?  
Yes, it can.**



**Be impressed.**

# The fastest way to polyether precision for smaller cases

## 3M™ Impregum™ Super

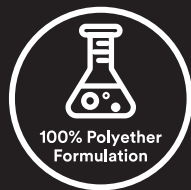
Impregum Polyether impression material has always been the trusted solution for complex situations and implants. So wouldn't it be great if you could get that same outstanding impression accuracy and detail reproduction even in single-unit cases? To ensure that the highest demands are fulfilled without limiting productivity, we created new Impregum Super Quick Polyether impression material.

With its brand new formulation Impregum Super Quick material combines the outstanding performance and reliability of a polyether with the speed of a VPS. Deep margins and moist environments will no longer slow you down.



### Quicker set.

So fast, so good: With just a two minute setting time the new Impregum Super Quick material allows for faster impressions in less complex cases like single-unit crowns, implants, inlays/onlays and smaller bridges up to 3 units.



### 100% Polyether. Trusted precision.

Like all polyethers Impregum Super Quick Materials demonstrate excellent performance in moist situations and great flow behaviour. Both lead to a high level of accuracy and detail reproduction for high-precision restorations.



It is especially important that you get the full working time of your impression material. Because it is a polyether, you get the full 45 seconds of working time with Impregum Super Quick material. You are able to avoid inaccuracies associated with premature setting that is experienced with VPS materials.



### Make your patients feel comfortable.

An improved fresh, minty taste together with a short time in the mouth significantly increases your patients' comfort.



**“I would, without a doubt, recommend it – once you've used Impregum, you won't use anything else.”**

**Dr Kunal Shah BDS**  
Principal of LeoDental, London

ether  
es.  
Quick.

# HIGHLY SATISFIED

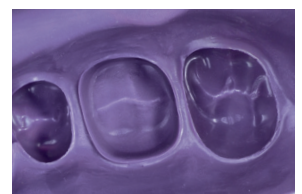
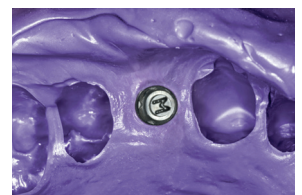
A clinical evaluation shows a **very high satisfaction rate** of almost **95%** regarding the **precision** of 3M™ Impregum™ Super Quick Material impressions and the **fit of the final restorations.**



Source: 3M field evaluation with 447 participants from Europe and the US, 2017.

## 3M™ Impregum™ Super Quick

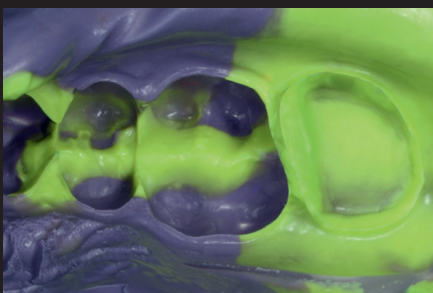
- ▶ **First superfast polyether with 45 sec. working time and quick 2-minute setting**
- ▶ **Available in medium and light body consistencies**
- ▶ **For monophasic and 1-step impression techniques**
- ▶ **Perfect for impressions for single-unit crowns, implants, inlays/onlays and smaller bridges up to 3 units**



Fast and gentle moisture management and retraction of gingival tissue with 3M™ Astringent Retraction Paste.

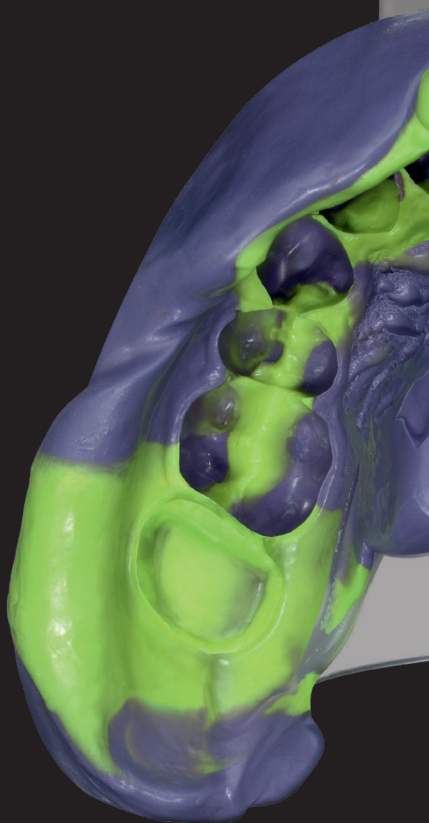


Convenient and highly accurate application of 3M™ Impregum™ Super Quick Light Body Polyether Impression Material using 3M™ Intra-oral Syringe Purple.



Precise, void-free details plus contrasting colors for excellent readability.

High-precision 1-step impression made with 3M™ Impregum™ Super Quick Polyether Impression Material (Medium and Light Body) and single-use 3M™ Impression Tray.



The **2 MIN** Polyether

	Dispensing system	Impression technique	Single-unit crown	Small implant (≤ 2 units)	Inlay/onlay (≤ 2 units)	Small bridge (≤ 3 units)	Recommended max. working time (min:sec)	Intra-oral setting time at 37°C (min:sec)
3M™ Impregum™ Penta™ Super Quick (Medium Body)		Monophase or 1-step	✓	✓	✓	✓	0:45	2:00
3M™ Impregum™ Penta™ Super Quick (Heavy Body)		1-step	✓	✓	✓	✓	0:45	2:00
3M™ Impregum™ Super Quick (Light Body)		1-step	✓	✓	✓	✓	0:45	2:00

## Ordering information



3M™ Impregum™ Penta™ Super Quick Medium Body Introductory Kit (69383)



3M™ Impregum™ Penta™ Super Quick Medium Body/Light Body Introductory Kit (69381)



3M™ Impregum™ Penta™ Super Quick Medium Body Upgrade Kit (69404)



3M™ Intra-oral polyether syringes (71507)

Item no.	Product information
<b>New</b> Introductory kits for 3M™ Pentamix™ 3 Automatic Mixing Unit	
69383	<b>3M™ Impregum™ Penta™ Super Quick Medium Body</b> 1 base paste MB – 300 ml, 1 catalyst MB – 60 ml, 1 3M™ Penta™ Cartridge MB, 10 3M™ Penta™ Mixing Tips – Red, 1 3M™ Penta™ Elastomer Syringe, 1 Polyether Tray Adhesive – 17 ml, 3 3M™ Astringent Retraction Paste capsules
69381	<b>3M™ Impregum™ Penta™ Super Quick Medium Body/Light Body</b> 1 base paste MB – 300 ml, 1 catalyst MB – 60 ml, 2 cartridges LB – 50 ml each, 1 3M™ Penta™ Cartridge MB, 10 3M™ Penta™ Mixing Tips – Red, 5 3M™ Intra-oral Syringes Purple, 5 3M™ Garant™ Mixing Tips purple, 5 3M™ Garant™ Intra-oral Tips white, 1 Polyether Tray Adhesive – 17 ml, 3 3M™ Astringent Retraction Paste capsules, 6 3M™ Impression Trays
69413	<b>3M™ Impregum™ Penta™ Super Quick Heavy Body/Light Body</b> 1 base paste HB – 300 ml, 1 catalyst HB – 60 ml, 2 3M™ Impregum™ Super Quick LB cartridges – 50 ml each, 1 3M™ Impregum™ Penta™ HB Cartridge for 3M™ Pentamix™ 3 Automatic Mixing Unit, 10 3M™ Penta™ Mixing Tips – Red, 5 3M™ Intra-oral Syringes Purple, 5 3M™ Garant™ Mixing Tips purple, 5 3M™ Garant™ Intra-oral Tips white, 1 3M™ Polyether Tray Adhesive – 17 ml, 3 3M™ Astringent Retraction Paste capsules, 6 3M™ Impression Trays
<b>New</b> Upgrade kits for 3M™ Pentamix™ 3 Automatic Mixing Unit	
69404	<b>3M™ Impregum™ Penta™ Super Quick Medium Body</b> 1 base paste MB – 300 ml, 1 catalyst MB – 60 ml, 10 3M™ Penta™ Mixing Tips – Red
69411	<b>3M™ Impregum™ Penta™ 3 Super Quick Heavy Body/Light Body</b> 1 base paste HB – 300 ml, 1 catalyst HB – 60 ml, 1 3M™ Impregum™ Super Quick LB cartridge – 50 ml, 10 3M™ Penta™ Mixing Tips – Red, 5 3M™ Intra-oral Syringes – Purple, 5 3M™ Garant™ Mixing Tips – Purple, 5 3M™ Garant™ Intra-oral Tips – White
<b>New</b> Refills	
69385	<b>3M™ Impregum™ Penta™ Super Quick Medium Body Refill</b> 2 base pastes - 300 ml each, 2 catalysts - 60 ml each
69406	<b>3M™ Impregum™ Penta™ 3 Super Quick Heavy Body Refill</b> 2 base pastes – 300 ml each, 2 catalysts – 60 ml each
69379	<b>3M™ Impregum™ Super Quick Light Body Refill</b> 4 cartridges – 50 ml each, 5 3M™ Intra-oral Syringes Purple, 5 3M™ Garant™ Mixing Tips purple
<b>New</b> Mixing devices and accessories	
77873	<b>3M™ Pentamix™ 3 Automatic Mixing Unit UK</b>
77902	<b>3M™ Pentamix™ Lite Automatic Mixing Unit UK</b>
69387	<b>3M™ Impregum™ Penta™ Super Quick Cartridge for Pentamix™ 3</b>
71507	<b>3M™ Intra-oral polyether syringes (purple), 20 pieces</b>
77580	<b>3M™ Garant™ cartridge dispenser 1:1/2:1</b>
56944	<b>3M™ Astringent Retraction Paste capsules (25pk)</b>
69413	<b>Polyether Tray Adhesive – 17 ml</b>
77949	<b>3M™ Penta™ Mixing Tips – Red, 50 pieces</b>
71454	<b>3M™ Garant™ Mixing Tips purple, 50 pieces</b>
71461N	<b>3M™ Garant™ Intra-oral Tips white, 50 pieces</b>
71616	<b>3M™ Impression Trays, size M, upper jaw (10)</b>
71619	<b>3M™ Impression Trays, size M, lower jaw (10)</b>

[3M.co.uk/ImpSQ](http://3M.co.uk/ImpSQ)

3M Oral Care  
3M United Kingdom PLC  
Charnwood Campus  
10 Bakewell Road  
Loughborough  
LE11 5RB

3M Ireland Ltd  
The Iveagh Building  
The Park, Carrickmines  
Dublin D18 X015  
Ireland  
+353 (0)1280 3555

0800 626 578  
 [OralCareUK@mmm.com](mailto:OralCareUK@mmm.com)  
 @3MOralCareUK

GD028. J442717.  
3M, Garant, Impregum, Penta and Pentamix are trademarks of the 3M company. All other trademarks are owned by other companies.  
© 3M 2018. All rights reserved.

